

Bay Entrance Data Summary

Date	Temp C	SpCond mS/cm	Salinity ppt	DO Conc mg/L	pH	Turbidity+ NTU
12/3/2004	9.57	52.08			7.86	4.65
12/17/2004	11.34	49.92	32.56	10.02	7.99	9.20
12/29/2004	11.29	49.17	32.02	9.70	8.01	2.81
1/14/2005	10.95	48.61	31.60	9.66	8.03	1.59
1/28/2005	11.84	47.82	31.07	9.62	7.99	19.98
2/10/2005	10.97	50.06	32.64	8.82	7.94	4.18
2/25/2005	11.81	47.95	31.16	9.65	8.01	6.91
3/15/2005	12.08	50.05	32.70	8.67	7.95	3.61
3/25/2005	12.00	46.16	29.88	10.45	8.05	7.99
4/11/2005	11.39	49.83	32.51	9.51	7.98	17.84
4/22/2005	8.82	52.36	34.16	4.83	7.68	8.34
5/6/2005	11.58	51.10	33.43	9.34	7.95	2.15
5/19/2005	13.48	49.06	32.03	10.05	8.08	5.89
6/3/2005	9.40	52.02	33.96	5.16	7.69	5.94
7/1/2005	9.71	51.21	33.40	6.00	7.81	5.35
7/8/2005	10.60	51.08	33.36	8.96	8.02	1.94
7/22/2005	11.59	51.77	33.93	8.90	7.91	2.45
8/5/2005	10.74	51.09	33.38	7.31	7.76	3.62
8/19/2005	10.56	51.23	33.47	7.27	7.77	1.90
9/2/2005	10.72	50.30	32.80	6.72	7.70	5.53
9/16/2005	10.96	50.28	32.80	8.13	7.80	2.60
9/30/2005	10.26	49.29	32.05	5.22	7.83	5.27
10/14/2005	10.82	50.59	33.02	8.28	7.90	
10/28/2005	11.59	51.33	33.60	8.31	7.96	0.00
11/4/2005	11.88	51.21	33.53	9.11	7.98	3.87
11/18/2005	10.98	51.59	33.76	8.09	7.89	0.00
12/2/2005	11.22	47.50	30.81	8.50	8.03	8.49
12/16/2005	10.46	50.01	32.57	8.48	7.97	1.75
1/13/2006	12.16	45.04	29.10	8.93	8.09	20.60
1/26/2006	10.92	46.02	29.73	9.32	8.08	10.58
2/10/2006	11.23	45.00	29.02	9.31	7.99	0.36
2/24/2006	9.06	50.44	32.79	5.20	7.72	6.17
3/16/2006	10.03	45.21	29.10	9.99	8.01	19.54
4/14/2006	11.62	48.01	31.20	9.60	8.03	3.82
4/28/2006	9.12	50.51	32.84	6.03	7.79	11.39
5/12/2006	8.63	51.02	33.18	6.37	7.70	5.44
5/26/2006	12.04	47.63	30.94	9.57	8.01	1.34
6/9/2006	9.99	49.03	31.84	6.98	7.79	2.77
6/23/2006	9.30	50.08	32.55	6.84	7.68	6.56
7/7/2006	10.84	49.66	32.35	8.81	7.91	0.58
7/21/2006	10.02	49.89	32.46	7.43	7.80	2.23
8/4/2006	10.80	49.93	32.54	10.01	7.84	5.16
8/18/2006	10.51	51.67	33.78	5.89	7.85	1.24
9/8/2006	11.55	51.82	33.96	8.36	8.20	0.80
9/22/2006	9.97	51.02	33.28	7.97	7.92	9.18
10/6/2006	11.17	51.93	34.01	7.70	8.06	
10/20/2006	10.99	51.90	33.98	6.42	7.87	4.97
11/2/2006	11.00	50.44	32.92	7.97	8.00	

Bay Entrance Data Summary

Date	Temp C	SpCond mS/cm	Salinity ppt	DO Conc mg/L	pH	Turbidity+ NTU
11/17/2006	12.13	50.94	33.35	8.85	8.17	0.23
12/1/2006	11.19	50.98	33.33	6.88	8.05	4.28
12/8/2006	10.67	51.20	33.45	8.70	8.01	3.95
12/22/2006	11.43	49.71			8.08	7.14
1/5/2007	10.42	50.13	32.66	8.12	7.97	10.89
1/19/2007	9.12	51.39	33.48	3.20	7.82	26.49
2/2/2007	9.66	50.64	32.98	4.04	8.06	6.02
2/15/2007	10.87	45.80	29.57	9.55	8.16	9.16
3/2/2007	9.65	45.28	29.13	9.80	8.11	2.10
3/16/2007	9.52	51.29	33.44	6.24	8.05	1.24
3/30/2007	8.56	51.87	33.78	5.59	7.76	13.04
4/13/2007	9.18	51.93	33.88	6.42	7.88	4.96
4/27/2007	9.35	50.81	33.08	7.49	7.87	
5/18/2007	9.62	52.52	34.34	8.50	7.92	15.44
6/4/2007	9.97	51.86	33.88	11.34	8.20	2.25
6/15/2007	9.73	52.23	34.14	7.11	7.79	1.53
6/29/2007	11.01	52.13	34.15	10.33	8.08	2.33
7/13/2007	11.74	50.79	33.22	10.02	7.97	0.19
7/27/2007	10.88	50.37	32.86	6.81	7.95	0.22
8/10/2007	10.94	51.10	33.39	7.66	7.83	0.38
8/24/2007	10.37	50.62	33.01	6.46	7.84	5.56
9/7/2007	9.91	50.51	32.90	7.46	7.94	4.63
9/21/2007	9.76	50.34	32.77	6.93	7.87	5.93
10/5/2007	10.32	52.10	34.09	7.78	7.84	4.29
10/12/2007	11.10	50.91	33.27	8.82	7.91	1.34
10/17/2007	12.94	50.89	33.34	9.25	8.09	1.55
10/26/2007	10.00	51.89	33.91	7.97	7.92	9.31
11/9/2007	10.52	50.83	33.17	8.35	7.85	
11/21/2007	10.19	51.01	33.28	6.89	7.68	8.37
12/7/2007	10.48	49.62	32.29	9.51	7.81	17.00
12/13/2007	8.96	51.57	33.60	7.01	7.69	2.36
12/28/2007	8.98	50.37	32.73	9.37	7.82	4.68
1/11/2008	10.06	46.94	30.35	9.42	7.92	21.67
1/25/2008	9.15	49.16	31.88	9.26	7.88	0.70
2/8/2008	9.34	50.42	32.80	8.92	7.78	12.17
2/26/2008	9.39	50.46	32.83	8.64	7.86	10.15
3/7/2008	9.22	51.05	33.25	7.75	7.64	0.07
3/21/2008	9.06	50.96	33.16	7.86	7.83	6.39
4/4/2008	8.65	51.48	33.51	6.68	7.62	2.23
4/18/2008	8.56	50.77	33.00	6.94	7.64	4.52
5/2/2008	8.52	51.76	33.70	5.70	7.59	0.28
5/16/2008	8.25	51.97	33.83	7.03	7.60	0.00
5/23/2008	8.55	52.04	33.90	8.55	7.61	1.04
6/6/2008	10.51	51.50	33.66	10.11	7.95	2.61
6/20/2008	8.34	52.16	33.97	5.25	7.66	0.21
7/3/2008	9.96	51.36	33.52	8.52	7.79	0.80
7/18/2008	10.95	51.82	33.93	8.68	7.95	2.72
8/1/2008	11.07	51.68	33.83	9.30	7.88	1.67

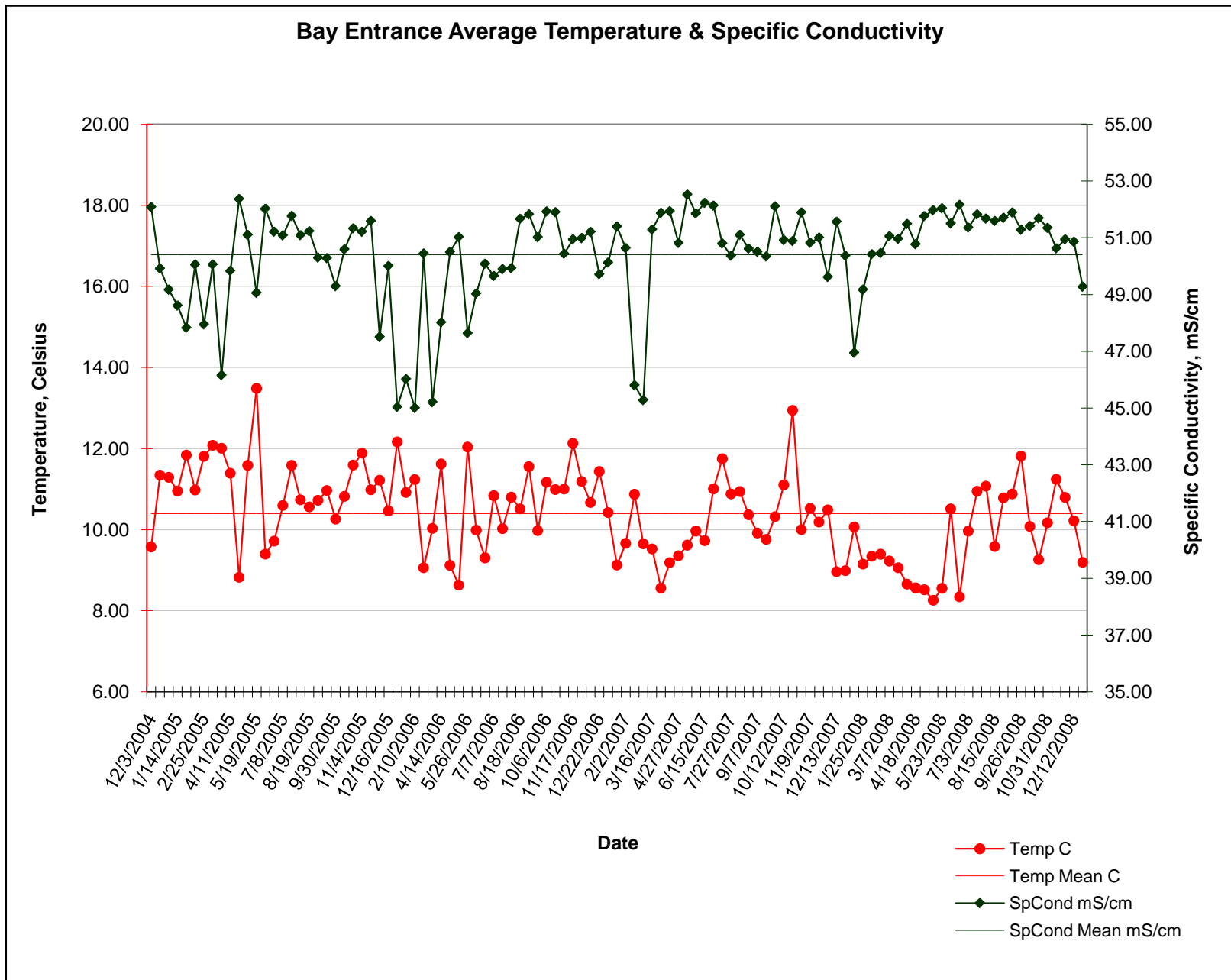
Bay Entrance Data Summary

Date	Temp C	SpCond mS/cm	Salinity ppt	DO Conc mg/L	pH	Turbidity+ NTU
8/15/2008	9.58	51.59	33.66	6.76	7.80	4.90
8/29/2008	10.78	51.70	33.82	7.99	7.66	6.40
9/12/2008	10.88	51.89	33.97	9.25	7.83	0.00
9/26/2008	11.81	51.28	33.58	7.91	7.90	2.19
10/10/2008	10.08	51.41	33.57	7.59	7.88	6.79
10/24/2008	9.25	51.68	33.71	7.22	7.62	3.77
10/31/2008	10.17	51.35	33.53	8.76	7.70	1.86
11/14/2008	11.24	50.62	33.07	8.48	7.78	2.08
11/26/2008	10.79	50.94	33.27	8.00	7.75	0.40
12/12/2008	10.22	50.86	33.18	8.53	7.90	4.85
12/24/2008	9.19	49.27	31.96	9.55	7.95	3.85
Mean	10.395	50.399	32.845	8.044	7.886	5.272

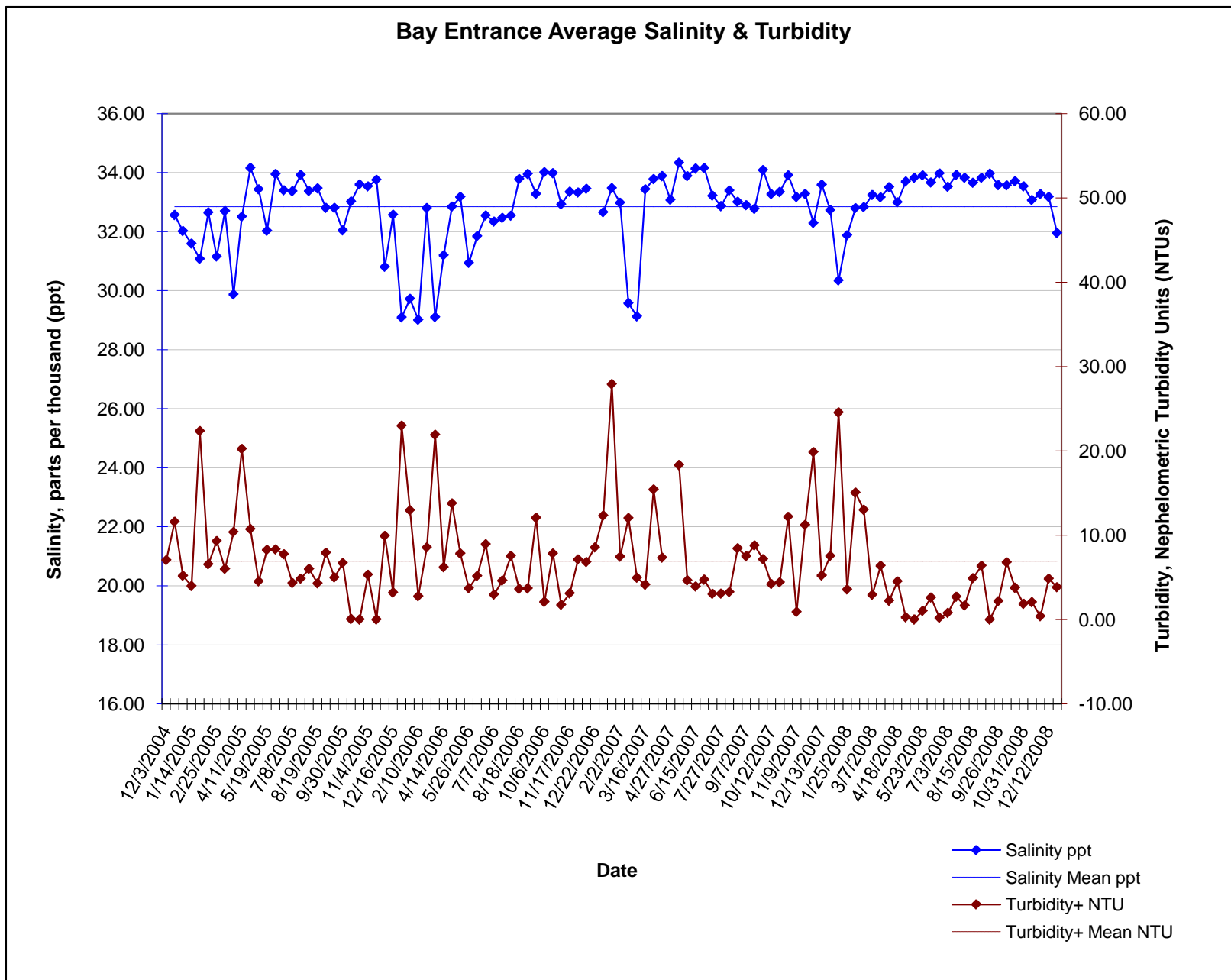
Exceedance of Applicable Water Quality Criteria

Parameter	Criteria	Source
Dissolved Oxygen	6.0 mg/L (min)	NCRQCB Basin Plan, Objectives for Inland Waters, Enclosed Bays and Estuaries
pH	7.0 - 8.5 (range)	NCRQCB Basin Plan, Objectives for Inland

Humboldt Bay Entrance Water Quality Figures, data collected Dec 2004 - Dec 2008



Humboldt Bay Entrance Water Quality Figures, data collected Dec 2004 - Dec 2008



Humboldt Bay Entrance Water Quality Figures, data collected Dec 2004 - Dec 2008

