

Mad River Slough Data Summary

Date	Temp C	SpCond mS/cm	Salinity ppt	DO Conc mg/L	pH	Turbidity+ NTU
12/3/2004	8.43	50.69			8.03	5.32
12/17/2004	10.93	44.72	28.80	8.30	7.76	11.57
12/29/2004	9.72	45.95	29.61	9.34	7.80	6.72
1/14/2005	8.73	40.67	25.83	9.83	7.87	9.18
1/28/2005	10.65	44.33	28.51	9.32	7.83	27.39
2/10/2005	10.74	46.93	30.38	9.51	7.90	7.92
2/25/2005	12.32	46.39	30.06	8.54	7.83	6.34
3/17/2005	13.81	46.05	29.87	7.67	7.82	9.21
3/25/2005	13.03	42.14	27.05	10.43	7.91	9.69
4/11/2005	14.12	36.32	22.98	9.52	7.85	11.26
4/22/2005	15.42	44.50	28.79	8.98	7.98	9.35
5/6/2005	17.21	47.46	30.95	9.13	7.90	9.98
5/19/2005	16.33	43.18	27.85	8.19	7.87	12.32
6/3/2005	17.09	48.28	31.54	6.01	7.92	10.55
7/1/2005	18.13	48.64	31.81	6.94	7.97	8.40
7/8/2005	19.54	49.60	32.52	7.84	8.10	9.77
7/22/2005	18.86	51.42	33.85	7.06	7.88	10.92
8/5/2005	20.51	49.93	32.75	7.71	7.75	9.00
8/19/2005	17.50	51.45	33.87	7.95	7.81	10.29
9/2/2005	18.82	50.70	33.32	7.86	7.91	8.62
9/16/2005	17.30	50.40	33.09	6.99	7.76	12.37
9/30/2005	16.63	49.24	32.24	8.79	8.10	6.63
10/14/2005	15.28	51.28	33.71	9.01	8.23	0.00
10/28/2005	13.58	50.56	33.13	7.90	8.07	0.00
11/4/2005	12.76	49.44	32.28	8.18	8.02	0.13
11/18/2005	12.28	46.72	30.29	9.60	7.99	0.00
12/2/2005	10.21	40.44	25.74	8.27	7.80	8.29
12/16/2005	9.07	45.16	29.01	9.08	7.98	1.90
12/30/2005	11.37	30.84	19.15	9.28	7.84	55.87
1/13/2006	11.13	35.38	22.26	8.41	7.80	33.23
1/26/2006	9.16	37.55	23.68	8.64	7.94	10.77
2/10/2006	12.05	35.94	22.67	9.52	7.95	11.44
2/24/2006	9.47	45.21	29.07	8.94	8.02	5.43
3/10/2006	7.77	32.73	20.30	9.79	7.84	10.29
3/16/2006	9.07	33.41	20.82	10.42	7.92	26.28
4/14/2006	15.13	40.03	25.60	9.63	8.04	7.24
4/28/2006	14.94	43.78	28.26	8.73	7.98	12.73
5/12/2006	17.02	48.02	31.35	8.97	8.06	10.54
5/26/2006	17.22	47.42	30.92	8.29	7.91	11.15
6/9/2006	18.84	47.13	30.71	7.73	8.02	9.16
6/23/2006	18.97	49.06	32.12	8.19	8.02	8.46
7/7/2006	17.32	49.55	32.47	7.35	7.82	8.95
7/20/2006	19.96	49.90	32.73	6.86	7.79	10.51
8/4/2006	19.13	50.41	33.11	8.08	7.81	7.37
8/18/2006	18.39	52.09	34.34	7.31	8.00	6.65
9/8/2006	16.28	51.91	34.19	8.08	8.04	6.34
9/22/2006	15.77	51.18	33.64	8.82	8.23	7.69
10/6/2006	14.77	52.10	34.29	7.94	8.14	5.84

Mad River Slough Data Summary

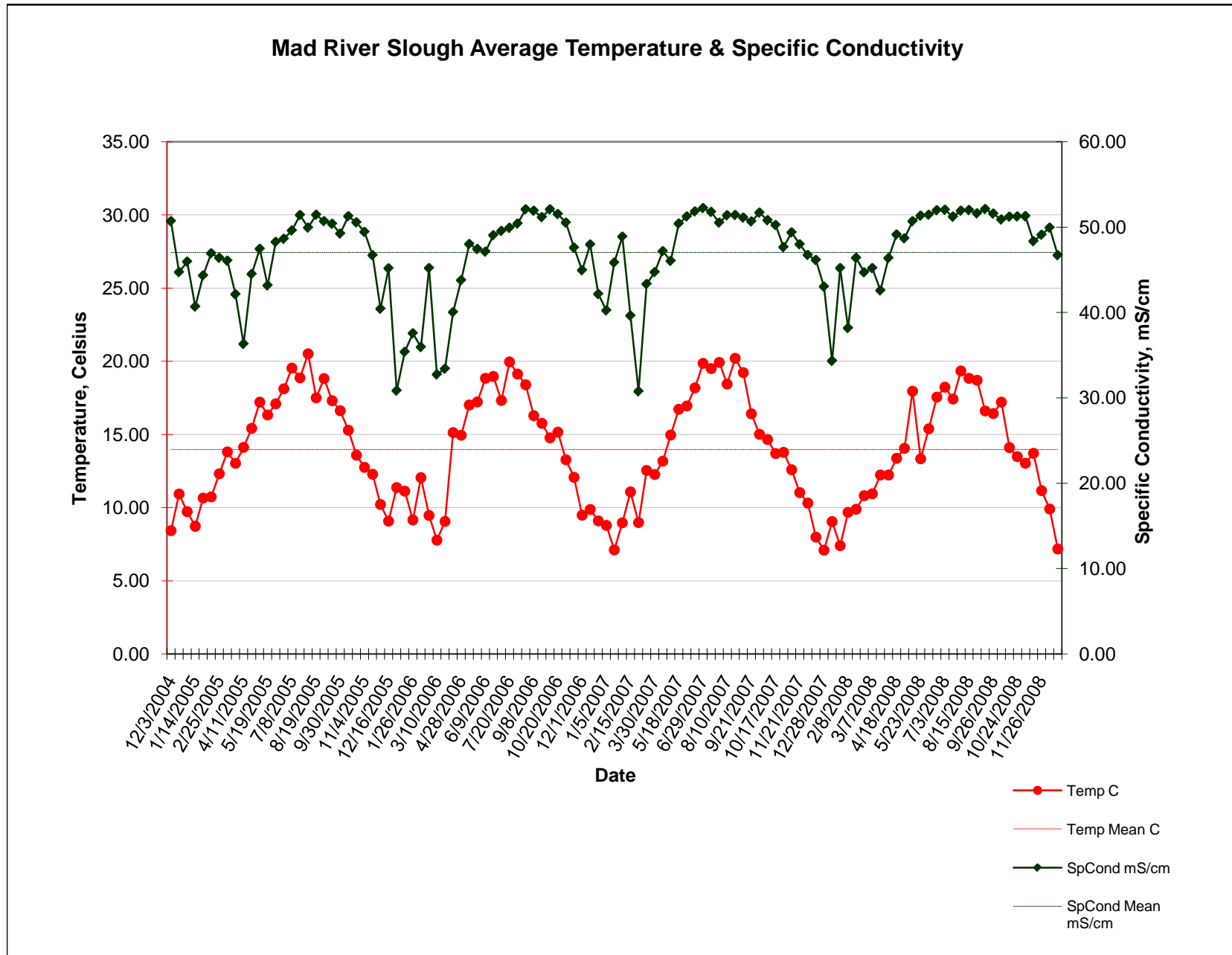
Date	Temp C	SpCond mS/cm	Salinity ppt	DO Conc mg/L	pH	Turbidity+ NTU
10/20/2006	15.15	51.54	33.90	8.46	8.13	3.61
11/2/2006	13.28	50.54	33.10	8.75	8.19	4.62
11/17/2006	12.06	47.60	30.92	8.85	8.08	3.80
12/1/2006	9.48	44.96	28.89	9.23	8.15	5.94
12/8/2006	9.87	47.97	31.07	9.06	8.04	5.15
12/22/2006	9.09	42.16			7.95	7.13
1/5/2007	8.78	40.24	25.52	8.76	7.84	13.21
1/19/2007	7.10	45.85	29.35	6.48	8.06	6.73
2/2/2007	8.97	48.87	31.65	4.60	8.12	3.49
2/15/2007	11.08	39.63	25.21	8.23	7.94	5.11
3/2/2007	8.97	30.75	19.01	9.95	7.95	5.36
3/16/2007	12.53	43.33	27.88	8.76	8.41	2.84
3/30/2007	12.27	44.71	28.85	9.98	8.06	5.11
4/13/2007	13.18	47.19	30.67	8.33	8.09	4.35
4/27/2007	14.96	46.03	29.88	7.94	8.00	6.44
5/18/2007	16.72	50.42	33.10	8.51	8.01	12.98
6/1/2007	16.96	51.25	33.72	7.57	7.98	15.26
6/15/2007	18.18	51.83	34.16	7.16	7.89	15.53
6/29/2007	19.86	52.23	34.45	7.17	8.05	8.47
7/13/2007	19.50	51.79	34.12	7.61	7.77	10.57
7/27/2007	19.93	50.52	33.19	6.96	8.22	8.78
8/10/2007	18.45	51.39	33.83	7.37	8.00	8.52
8/24/2007	20.21	51.43	33.86	5.48	8.15	6.54
9/7/2007	19.23	51.11	33.63	6.52	8.14	10.09
9/21/2007	16.42	50.65	33.27	7.32	8.11	7.26
10/5/2007	15.02	51.71	34.01	8.48	8.02	7.05
10/12/2007	14.66	50.81	33.35	7.58	7.92	6.89
10/17/2007	13.70	50.25	32.90	7.67	7.90	8.03
10/26/2007	13.77	47.66	31.03	8.14	7.93	14.33
11/9/2007	12.59	49.37	32.22	8.47	7.81	4.30
11/21/2007	11.03	48.00	31.16	7.99	7.77	5.21
12/7/2007	10.32	46.74	30.21	8.71	7.74	25.37
12/13/2007	7.99	46.15	29.63	9.17	7.71	11.11
12/28/2007	7.09	43.04	27.36	9.55	7.74	11.49
1/11/2008	9.04	34.33	21.45	9.58	7.68	13.96
1/25/2008	7.39	45.19	28.91	9.77	7.77	13.69
2/8/2008	9.68	38.16	24.13	9.77	7.71	24.02
2/21/2008	9.90	46.40	29.94	9.16	7.74	26.53
2/26/2008	10.81	44.71	28.79	9.20	7.82	5.61
3/7/2008	10.95	45.19	29.14	9.34	7.77	4.98
3/21/2008	12.23	42.59	27.34	9.91	7.87	5.41
4/4/2008	12.23	46.38	30.05	8.90	7.79	6.52
4/18/2008	13.36	49.14	32.08	7.83	7.79	7.06
5/2/2008	14.05	48.70	31.79	8.18	7.89	2.53
5/16/2008	17.96	50.70	33.32	8.73	7.85	3.48
5/23/2008	13.33	51.33	33.68	7.68	7.79	11.35
6/6/2008	15.39	51.46	33.84	7.98	7.93	6.08
6/20/2008	17.55	51.97	34.25	8.64	8.02	4.65

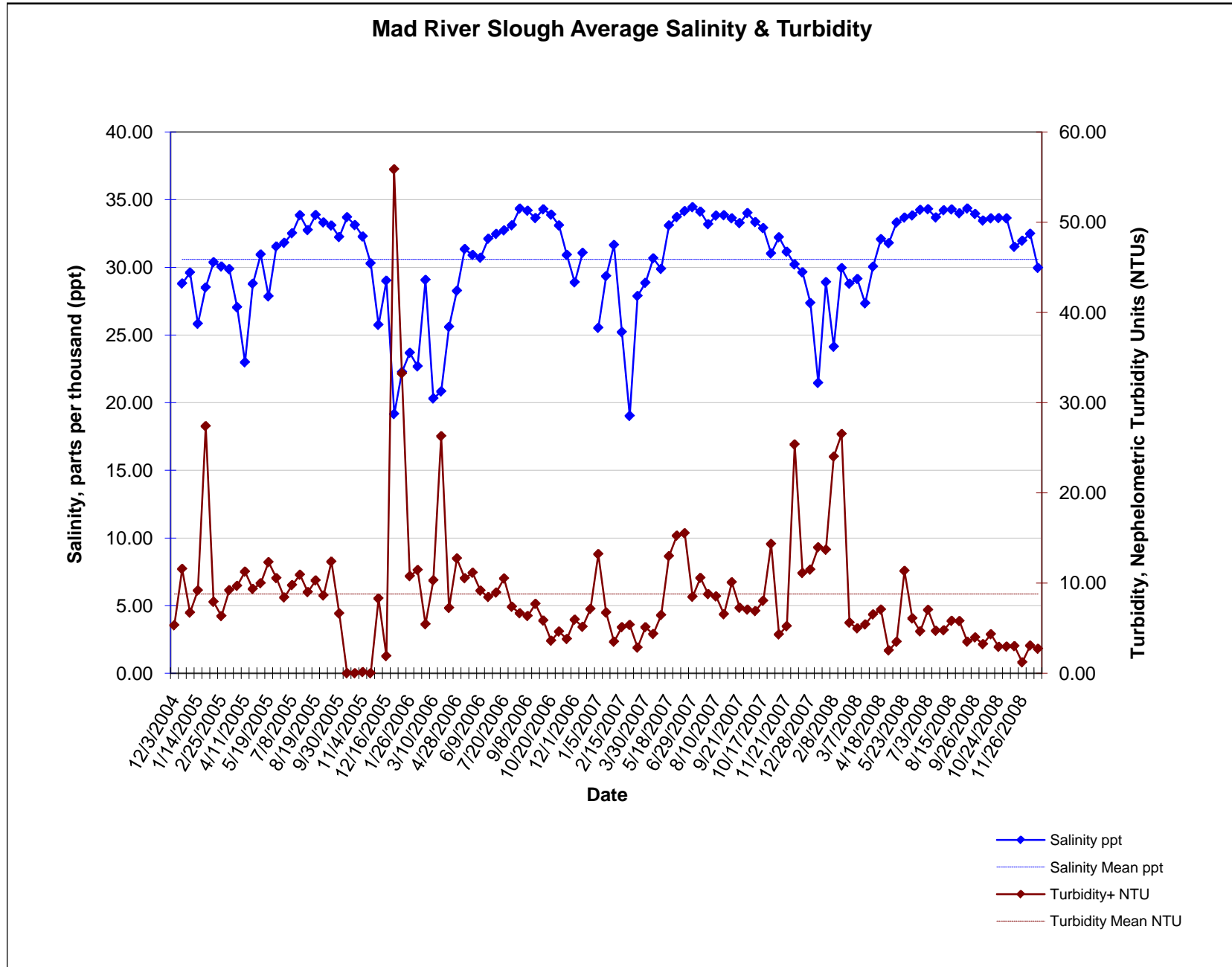
Mad River Slough Data Summary

Date	Temp C	SpCond mS/cm	Salinity ppt	DO Conc mg/L	pH	Turbidity+ NTU
7/3/2008	18.23	52.03	34.30	8.73	8.02	7.03
7/18/2008	17.42	51.21	33.69	7.34	7.98	4.71
8/1/2008	19.34	51.92	34.22	8.83	8.06	4.76
8/15/2008	18.84	52.00	34.28	7.89	8.00	5.81
8/29/2008	18.71	51.62	34.00	7.38	7.92	5.79
9/12/2008	16.61	52.12	34.35	8.26	8.05	3.50
9/26/2008	16.44	51.58	33.95	8.22	8.13	3.97
10/6/2008	17.21	50.90	33.46	7.48	7.87	3.22
10/10/2008	14.09	51.21	33.62	8.43	8.15	4.32
10/24/2008	13.48	51.26	33.64	8.68	7.96	2.93
10/31/2008	13.02	51.26	33.62	8.90	7.84	2.96
11/14/2008	13.71	48.34	31.52	8.22	7.77	3.01
11/26/2008	11.16	49.11	31.97	8.46	7.85	1.21
12/12/2008	9.91	49.93	32.48	8.97	8.01	3.07
12/24/2008	7.17	46.71	29.96	9.66	7.89	2.71
Mean	13.967	47.039	30.591	8.384	7.943	8.780

Exceedance of Applicable Water Quality Criteria

Parameter	Criteria	Source
Dissolved Oxygen	6.0 mg/L (min)	NCRQCB Basin Plan, Objectives for Inland Waters, Enclosed Bays and Estuaries
pH	7.0 - 8.5 (range)	NCRQCB Basin Plan, Objectives for Inland





Mad River Slough Water Quality Figures, data collected Dec 2004 - Dec 2008

