

## Bay Entrance Data Summary

Date	Temp C	SpCond mS/cm	Salinity ppt	DO Conc mg/L	pH	Turbidity NTU
1/9/2009	9.52	50.24	32.68	8.41	7.59	7.36
1/23/2009	9.80	50.32	32.76	8.94	7.86	1.95
1/30/2009	9.06	51.55	33.59	7.41	7.59	3.37
2/13/2009	9.05	49.90	32.40	9.55	8.16	5.15
2/27/2009	10.14	47.15	30.49	9.19	8.01	9.31
3/13/2009	9.41	50.29	32.71	7.88	8.15	5.70
3/27/2009	8.34	50.24	32.59	4.99	7.71	8.30
4/10/2009	8.88	51.15	33.29	9.12	7.89	
4/24/2009	8.05	49.80	32.24	6.28	7.82	4.27
5/8/2009	10.21	50.44	32.87	8.79	7.97	8.33
5/22/2009	8.76	51.61	33.61	7.83	7.72	5.05
6/5/2009	10.31	51.23	33.45		8.17	0.00
6/19/2009	10.84	50.62	33.04	9.01	7.56	1.28
7/2/2009	10.53	48.08	31.19	10.51	7.89	3.46
7/17/2009	8.76	49.36	31.98	5.27	7.65	2.54
7/30/2009	11.06	49.62	32.33	11.51	8.28	2.84
8/7/2009	11.87	49.16	32.04	10.34	7.97	1.46
8/21/2009	11.42	50.51	33.00	9.16	8.02	1.89
9/1/2009	11.27	50.91	33.28	8.68	7.97	3.88
9/16/2009	12.81	49.68	32.45	9.03	7.98	2.95
9/30/2009	10.73	50.43	32.90	8.27	7.98	6.22
10/14/2009	11.07	50.53	32.99	8.86	7.90	6.69
10/28/2009	10.25	50.76	33.11	7.28	7.81	9.34
11/4/2009	10.53	50.32	32.81	7.30	7.80	1.75
11/18/2009	11.29	50.01	32.63	9.47	8.10	7.17
12/3/2009	9.40	50.82	33.09	7.57	7.88	6.15
12/17/2009	10.48	48.93	31.80	9.63	8.10	16.01
12/31/2009	10.87	49.26	32.06	9.10	8.21	7.46
1/14/2010	11.72	46.20	29.90	9.54	8.16	28.53
1/28/2010	11.33	48.04	31.21	8.63	8.16	9.31
2/11/2010	11.46	47.72	30.98	8.95	7.96	3.65
2/25/2010	11.62	46.97	30.44	9.44	8.15	12.15
3/4/2010	11.49	46.39	30.02	9.29	8.09	9.23
3/18/2010	11.13	48.80	31.74	9.41	8.09	13.35
4/1/2010	10.69	47.99	31.13	9.62	8.03	25.53
4/15/2010	10.55	47.86	31.03	8.24	7.98	4.54
4/29/2010	9.98	47.99	31.09	8.86	7.85	11.80
5/13/2010	8.76	50.95	33.14	5.85	7.81	2.50
5/27/2010	11.77	48.67	31.68	8.90	7.98	1.73
6/10/2010	11.12	49.35	32.14	7.71	7.83	3.16
6/23/2010	8.97	51.13	33.28	7.94	7.71	2.47
7/8/2010	9.51	51.23	33.40	8.73	7.82	3.01
7/22/2010	9.82	50.23	32.69	8.48	8.11	4.67
8/5/2010	9.96	50.45	32.86	6.94	7.64	1.49
8/19/2010	10.01	50.83	33.14	6.90	7.75	0.92
9/9/2010	9.93	49.68	32.31	8.11	7.74	0.82
9/23/2010	11.57	50.67	33.12	8.44	7.90	0.79
10/7/2010	10.44	51.51	33.67	7.53	7.83	0.65
10/21/2010	10.33	50.08	32.62	8.53	8.06	3.47

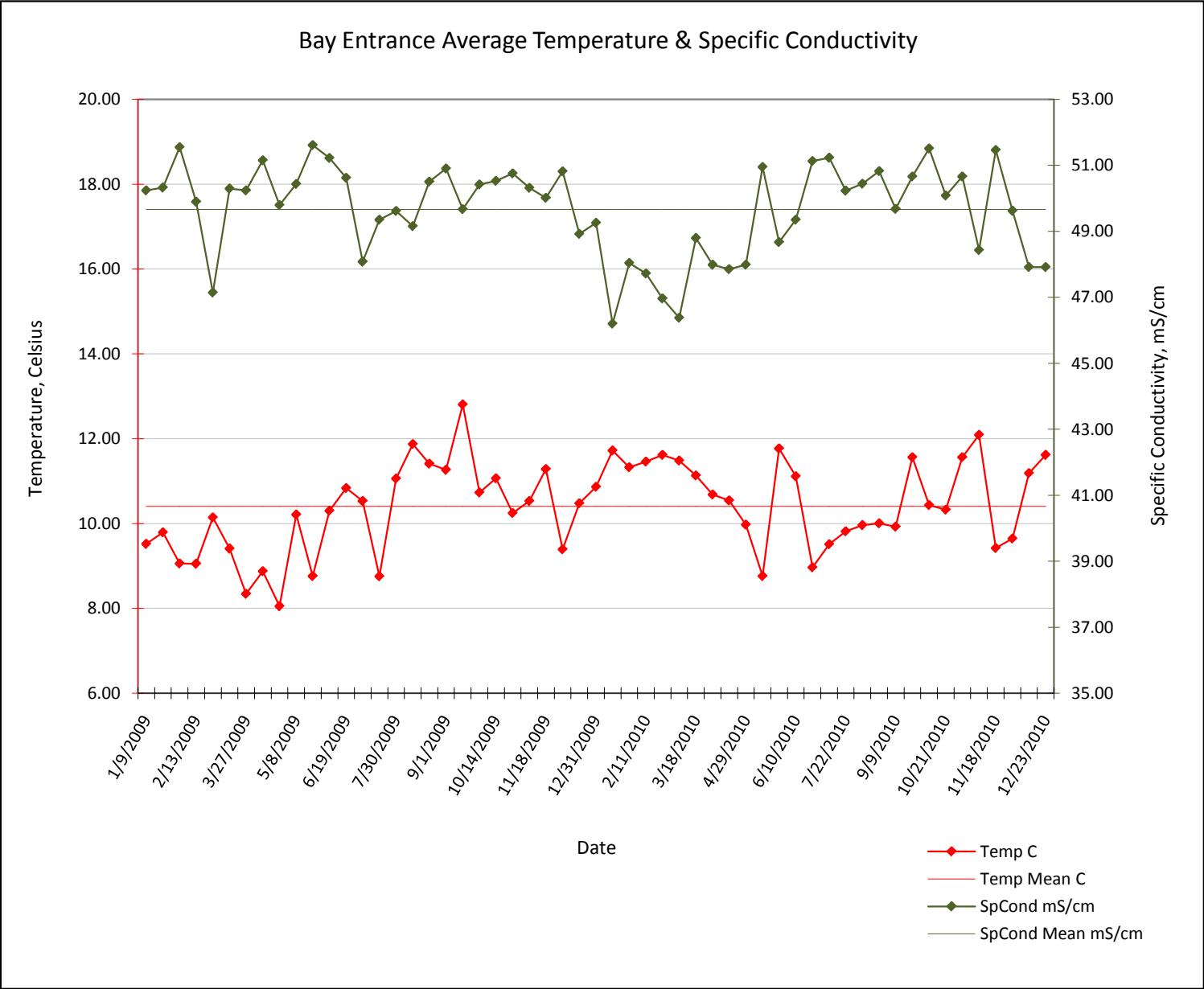
### Bay Entrance Data Summary

Date	Temp C	SpCond mS/cm	Salinity ppt	DO Conc mg/L	pH	Turbidity NTU
10/28/2010	11.57	50.67	33.12	8.44	7.90	0.79
11/4/2010	12.09	48.43	31.52	8.81	8.22	7.95
11/18/2010	9.42	51.47	33.56	6.19	7.73	6.90
12/2/2010	9.65	49.62	32.24	9.36	7.97	4.62
12/9/2010	11.19	47.92	31.13	9.44	8.00	7.35
12/23/2010	11.62	47.92	31.13	9.44	8.00	7.35
Mean	10.41	49.67	32.32	8.46	7.93	5.90

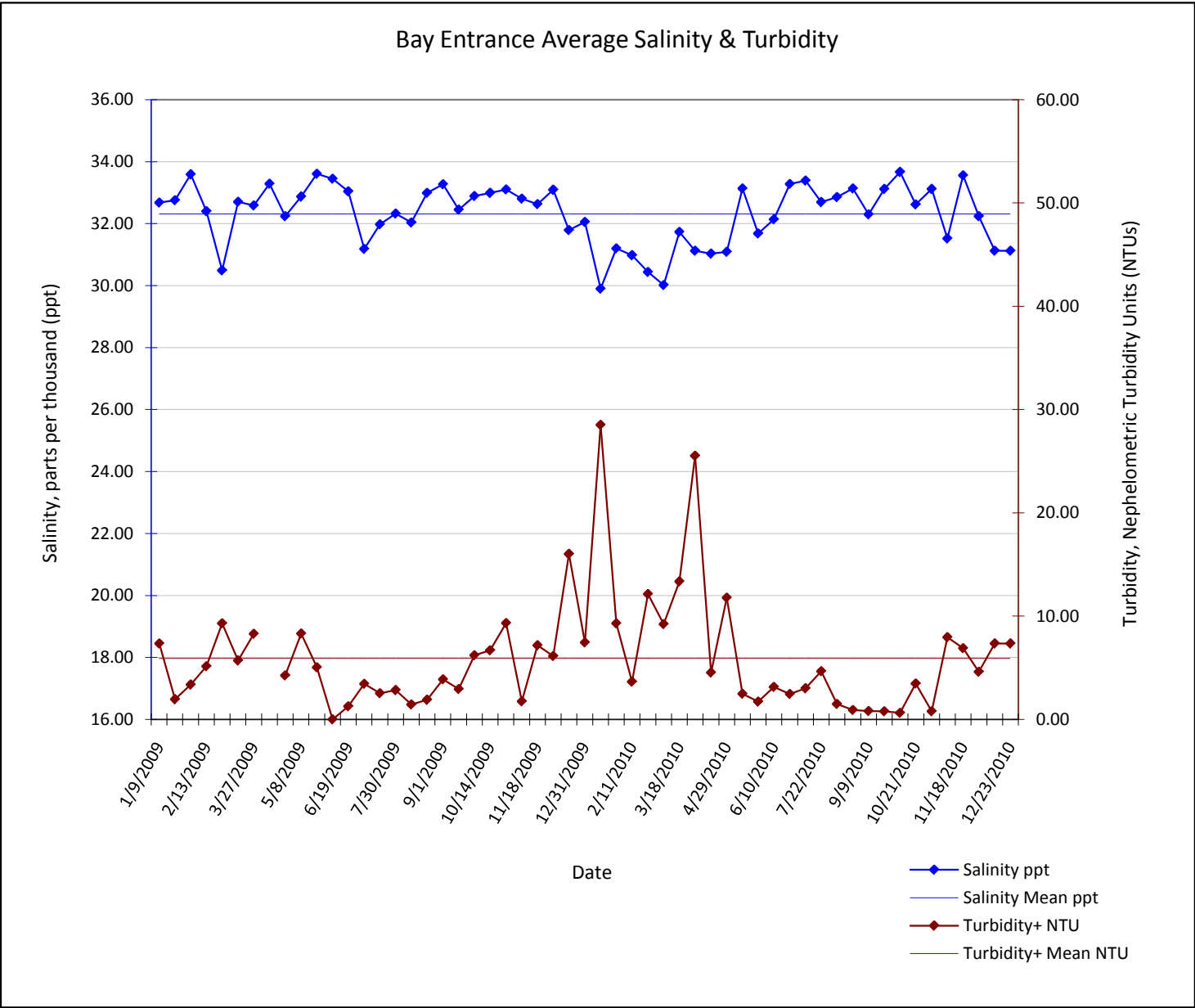
#### Exceedance of Applicable Water Quality Criteria

Parameter	Criteria	Source
Dissolved Oxygen	6.0 mg/L (min)	NCRQCB Basin Plan, Objectives for Inland Waters, Enclosed Bays and Estuaries
pH	7.0 - 8.5 (range)	NCRQCB Basin Plan, Objectives for Inland Waters, Enclosed Bays and Estuaries

# Humboldt Bay Entrance Water Quality Figures



# Humboldt Bay Entrance Water Quality Figures



# Humboldt Bay Entrance Water Quality Figures

