

Bay Entrance Data Summary

| Date | Temp C | SpCond mS/cm | Salinity ppt | DO Conc mg/L | pH | Turbidity NTU |
|------------|--------|-----------------|--------------|-----------------|------|------------------|
| 1/9/2009 | 9.52 | 50.24 | 32.68 | 8.41 | 7.59 | 6.86 |
| 1/23/2009 | 9.80 | 50.32 | 32.76 | 8.94 | 7.86 | 1.45 |
| 1/30/2009 | 9.06 | 51.55 | 33.59 | 7.41 | 7.59 | 2.87 |
| 2/13/2009 | 9.05 | 49.90 | 32.40 | 9.55 | 8.16 | 4.65 |
| 2/27/2009 | 10.14 | 47.15 | 30.49 | 9.19 | 8.01 | 8.81 |
| 3/13/2009 | 9.41 | 50.29 | 32.71 | 7.88 | 8.15 | 5.20 |
| 3/27/2009 | 8.34 | 50.24 | 32.59 | 4.99 | 7.71 | 7.80 |
| 4/10/2009 | 8.88 | 51.15 | 33.29 | 9.12 | 7.89 | |
| 4/24/2009 | 8.05 | 49.80 | 32.24 | 6.28 | 7.82 | 3.77 |
| 5/8/2009 | 10.21 | 50.44 | 32.87 | 8.79 | 7.97 | 7.83 |
| 5/22/2009 | 8.76 | 51.61 | 33.61 | 7.83 | 7.72 | 4.55 |
| 6/5/2009 | 10.31 | 51.23 | 33.45 | | 8.17 | |
| 6/19/2009 | 10.84 | 50.62 | 33.04 | 9.01 | 7.56 | 0.78 |
| 7/2/2009 | 10.53 | 48.08 | 31.19 | 10.51 | 7.89 | 2.96 |
| 7/17/2009 | 8.76 | 49.36 | 31.98 | 5.27 | 7.65 | 2.04 |
| 7/30/2009 | 11.06 | 49.62 | 32.33 | 11.51 | 8.28 | 2.34 |
| 8/7/2009 | 11.87 | 49.16 | 32.04 | 10.34 | 7.97 | 0.96 |
| 8/21/2009 | 11.42 | 50.51 | 33.00 | 9.16 | 8.02 | 1.39 |
| 9/1/2009 | 11.27 | 50.91 | 33.28 | 8.68 | 7.97 | 3.38 |
| 9/16/2009 | 12.81 | 49.68 | 32.45 | 9.03 | 7.98 | 2.45 |
| 9/30/2009 | 10.73 | 50.43 | 32.90 | 8.27 | 7.98 | 5.72 |
| 10/14/2009 | 11.07 | 50.53 | 32.99 | 8.86 | 7.90 | 6.19 |
| 10/28/2009 | 10.25 | 50.76 | 33.11 | 7.28 | 7.81 | 8.84 |
| 11/4/2009 | 10.53 | 50.32 | 32.81 | 7.30 | 7.80 | 1.25 |
| 11/18/2009 | 11.29 | 50.01 | 32.63 | 9.47 | 8.10 | 6.67 |
| 12/3/2009 | 9.40 | 50.82 | 33.09 | 7.57 | 7.88 | 5.65 |
| 12/17/2009 | 10.48 | 48.93 | 31.80 | 9.63 | 8.10 | 15.51 |
| 12/31/2009 | 10.87 | 49.26 | 32.06 | 9.10 | 8.21 | 6.96 |
| 1/14/2010 | 11.72 | 46.20 | 29.90 | 9.54 | 8.16 | 28.03 |
| 1/28/2010 | 11.33 | 48.04 | 31.21 | 8.63 | 8.16 | 8.81 |
| 2/11/2010 | 11.46 | 47.72 | 30.98 | 8.95 | 7.96 | 3.15 |
| 2/25/2010 | 11.62 | 46.97 | 30.44 | 9.44 | 8.15 | 11.65 |
| 3/4/2010 | 11.49 | 46.39 | 30.02 | 9.29 | 8.09 | 8.73 |
| 3/18/2010 | 11.13 | 48.80 | 31.74 | 9.41 | 8.09 | 12.85 |
| 4/1/2010 | 10.69 | 47.99 | 31.13 | 9.62 | 8.03 | 25.03 |
| 4/15/2010 | 10.55 | 47.86 | 31.03 | 8.24 | 7.98 | 4.04 |
| 4/29/2010 | 9.98 | 47.99 | 31.09 | 8.86 | 7.85 | 11.30 |
| 5/13/2010 | 8.76 | 50.95 | 33.14 | 5.85 | 7.81 | 2.00 |
| 5/27/2010 | 11.77 | 48.67 | 31.68 | 8.90 | 7.98 | 1.23 |
| 6/10/2010 | 11.12 | 49.35 | 32.14 | 7.71 | 7.83 | 2.66 |
| 6/23/2010 | 8.97 | 51.13 | 33.28 | 7.94 | 7.71 | 1.97 |
| 7/8/2010 | 9.51 | 51.23 | 33.40 | 8.73 | 7.82 | 2.51 |
| 7/22/2010 | 9.82 | 50.23 | 32.69 | 8.48 | 8.11 | 4.17 |
| 8/5/2010 | 9.96 | 50.45 | 32.86 | 6.94 | 7.64 | 0.99 |
| 8/19/2010 | 10.01 | 50.83 | 33.14 | 6.90 | 7.75 | 0.42 |
| 9/9/2010 | 9.93 | 49.68 | 32.31 | 8.11 | 7.74 | 0.32 |
| 9/23/2010 | 11.57 | 50.67 | 33.12 | 8.44 | 7.90 | 0.29 |
| 10/7/2010 | 10.44 | 51.51 | 33.67 | 7.53 | 7.83 | 0.15 |
| 10/21/2010 | 10.33 | 50.08 | 32.62 | 8.53 | 8.06 | 2.97 |

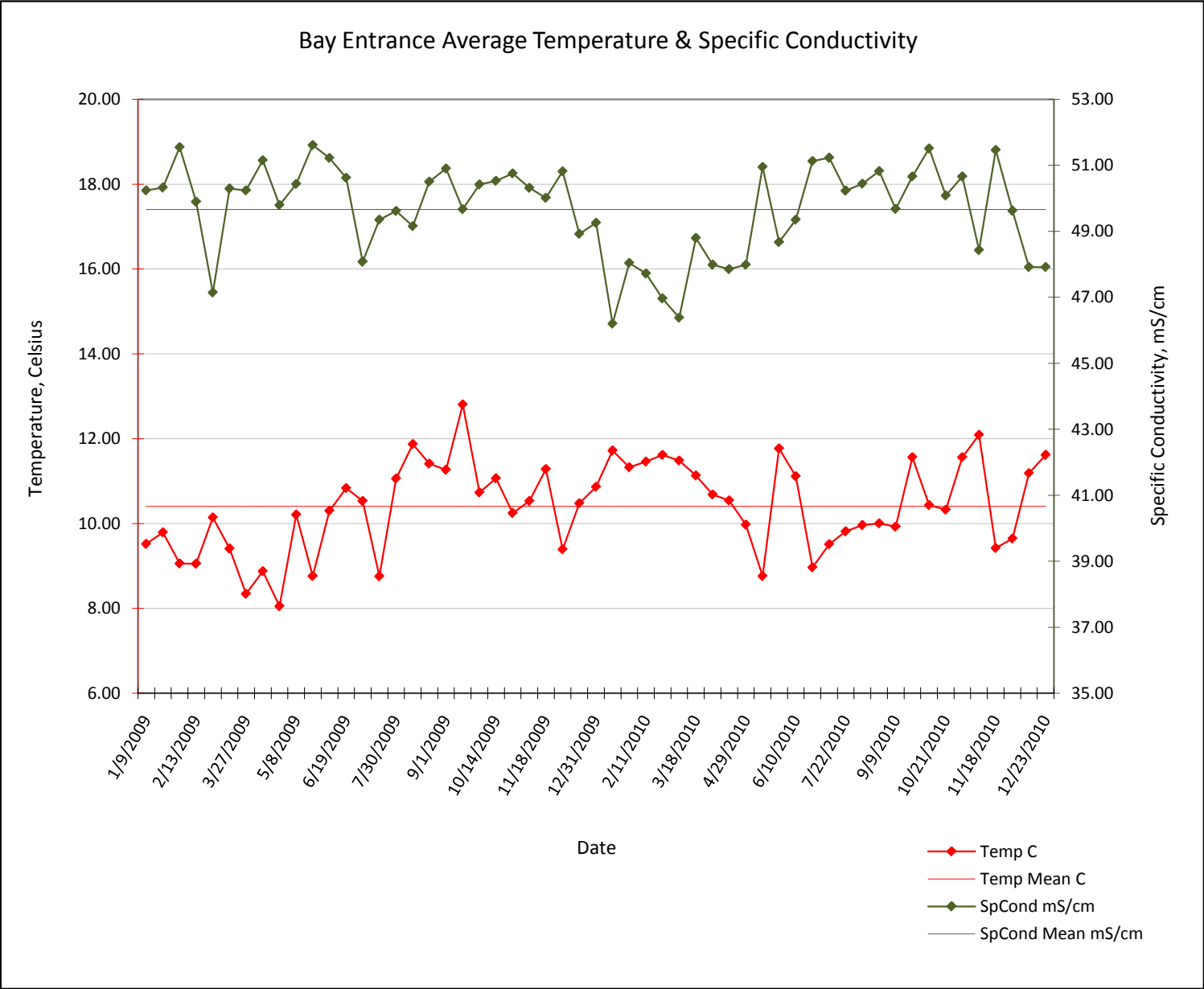
Bay Entrance Data Summary

| Date | Temp C | SpCond mS/cm | Salinity ppt | DO Conc mg/L | pH | Turbidity NTU |
|------------|--------|-----------------|--------------|-----------------|-------|------------------|
| 10/28/2010 | 11.57 | 50.67 | 33.12 | 8.44 | 7.90 | 0.29 |
| 11/4/2010 | 12.09 | 48.43 | 31.52 | 8.81 | 8.22 | 7.45 |
| 11/18/2010 | 9.42 | 51.47 | 33.56 | 6.19 | 7.73 | 6.40 |
| 12/2/2010 | 9.65 | 49.62 | 32.24 | 9.36 | 7.97 | 4.12 |
| 12/9/2010 | 11.19 | 47.92 | 31.13 | 9.44 | 8.00 | 6.85 |
| 12/23/2010 | 11.62 | 47.92 | 31.13 | 9.44 | 8.00 | 6.85 |
| Mean | 10.407 | 49.667 | 32.322 | 8.464 | 7.932 | 5.511 |

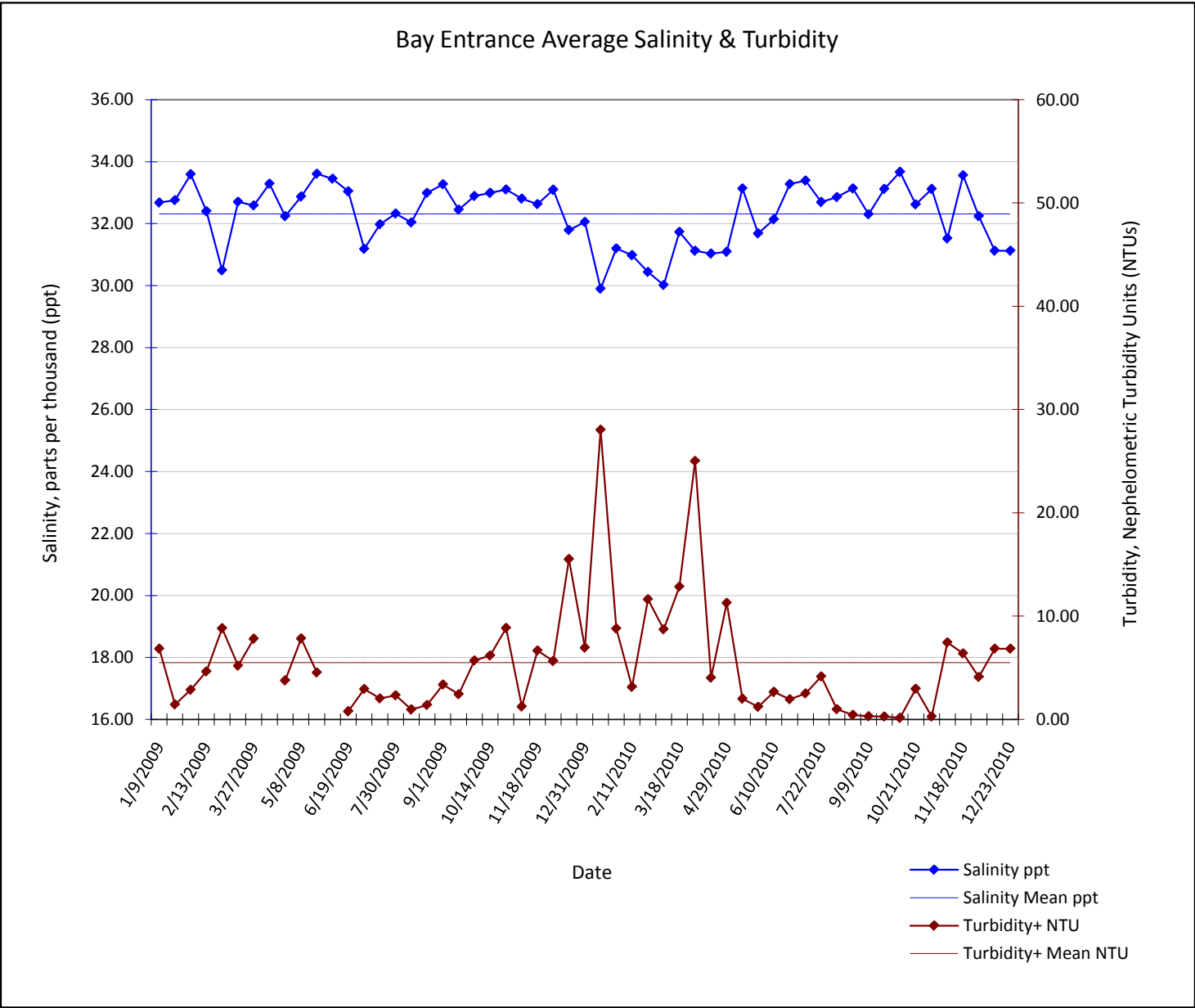
Exceedance of Applicable Water Quality Criteria

| Parameter | Criteria | Source |
|---------------------|-------------------|---|
| Dissolved Oxygen | 6.0 mg/L (min) | NCRQCB Basin Plan, Objectives for Inland Waters, Enclosed Bays and Estuaries |
| pH | 7.0 - 8.5 (range) | NCRQCB Basin Plan, Objectives for Inland Waters, Enclosed Bays and Estuaries |

Humboldt Bay Entrance Water Quality Figures



Humboldt Bay Entrance Water Quality Figures



Humboldt Bay Entrance Water Quality Figures

